

2024 Annual Report

LIGHTSHINE ALASKA
EMPOWERING
Generation To Generation

"For we are his workmanship, created in Christ Jesus for good works, which God prepared beforehand, that we should walk in them"

Ephesians 2:10



2024 Mission Teams

New Teams:

Globe Creek Snow Camp
Gambell
Pedro Bay

House Teams:

House Teams 1, 2 & 3
Bunkhouse
Father & Son

Off Base Teams:

Alaska Dream Center
Bingle Camp
Copper Center
Cross Road Medical Center
Globe Creek Camp
Gulkana
Homer
WEIO





LightShine Ministries served in 11 different locations throughout the state of Alaska and had our first fly-in teams to Pedro Bay and Gambell.

Meet Our Teams

2024 was our 29th year serving Bible Camps, Native Villages, and Churches in Alaska. We sent an all-time high of 143 volunteers to serve on 16 different teams.



01

Mission

Our purpose is to network with and send mission teams to Alaska in order to come alongside local churches, Bible camps and various ministries there – providing resources for them so they make passionate followers of Jesus Christ .

02

Vision

5 years from now LSIM will be known as a powerful ministry that partners with Christian believers in Alaska and among the indigenous peoples of North America assisting them in accomplishing their dreams in building the kingdom of Jesus Christ.

03

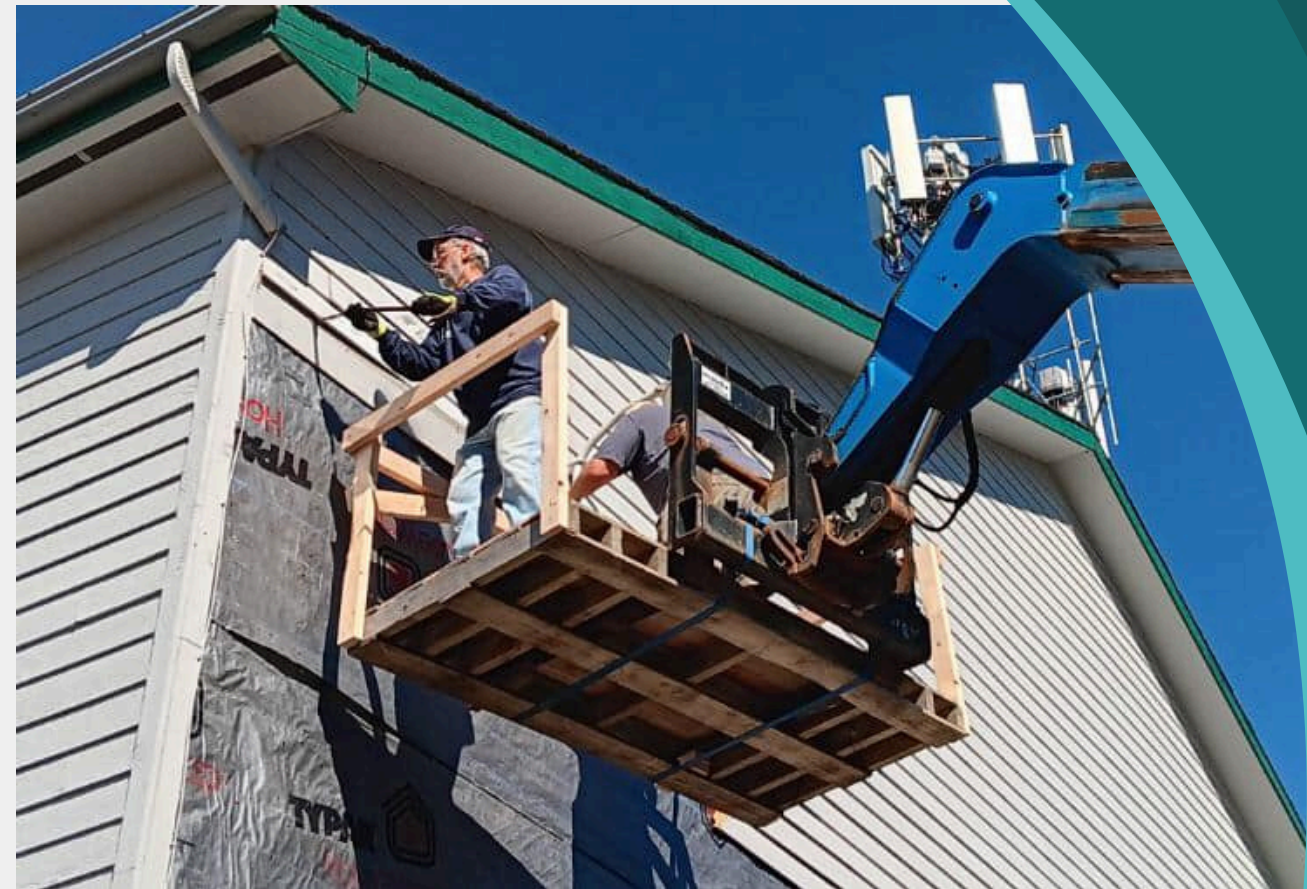
Values

Our missionary emphasis is defined by prayerful direction from the Holy Spirit, a commitment to excellence in accomplishing every task, the attention to detail and integrity in communication with others, the careful stewarding of the tools and resources entrusted to us, and the faithful pursuit of building lifelong partnerships to keep the Body of Christ strong.

• Globe Creek Snow Camp



• Homer - Regent Life & CCC



• House Team 1 - LSM Base



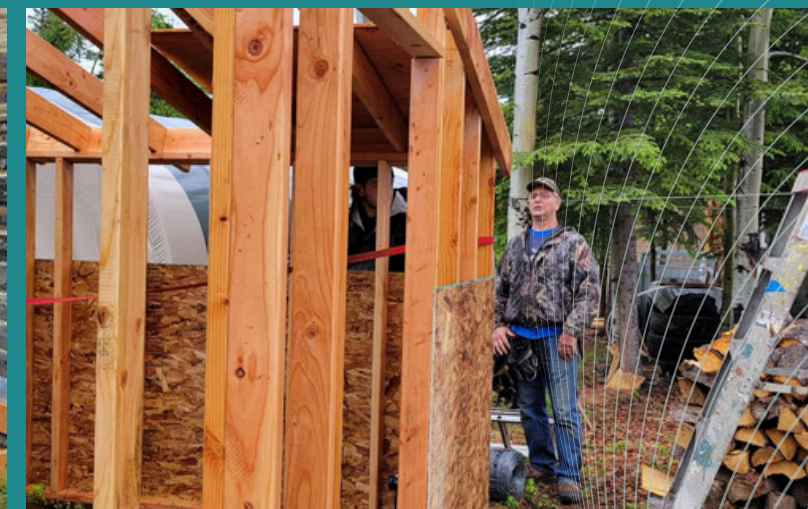
• House Team 2 - LSM Base



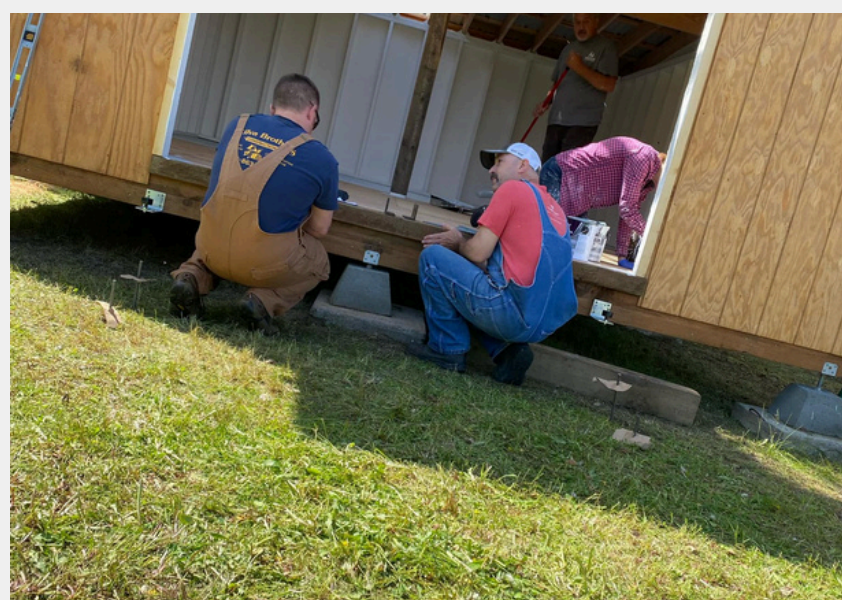
• Copper Center



Copper Center Team - 2024



• Bingle Camp



• Bunkhouse Team - LSM Base



Bunkhouse Team - 2024



• Cross Road Medical Center



Cross Road Team - 2024



• Gulkana Village



Gulkana Village Team - 2024



• House Team 3 - LSM Base



House Team 3 - 2024



WEIO



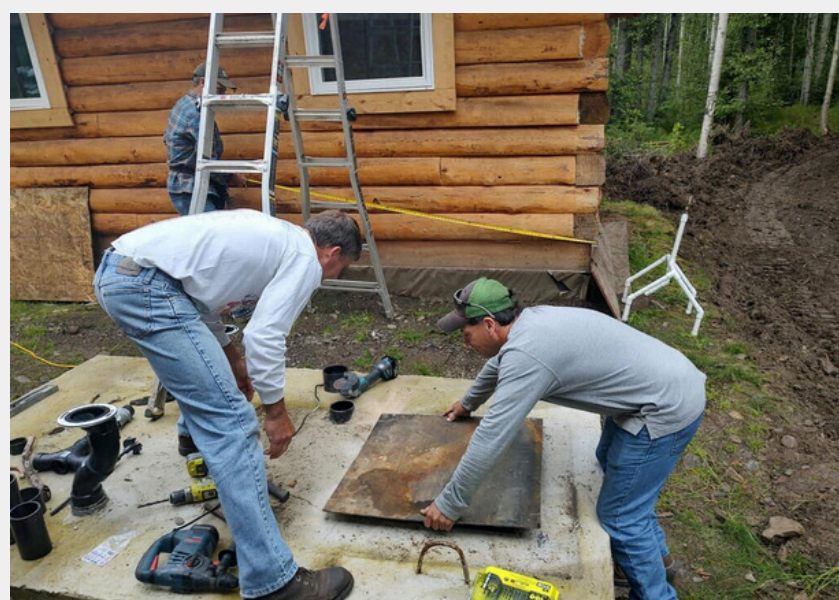
World Eskimo & Indian Olympics (WEIO) Team- 2024



• Globe Creek Camp



Globe Creek Bible Camp Team - 2024



Alaska Dream Center



Alaska Dream Center Team - 2024



• Father & Son Team - LSM Base



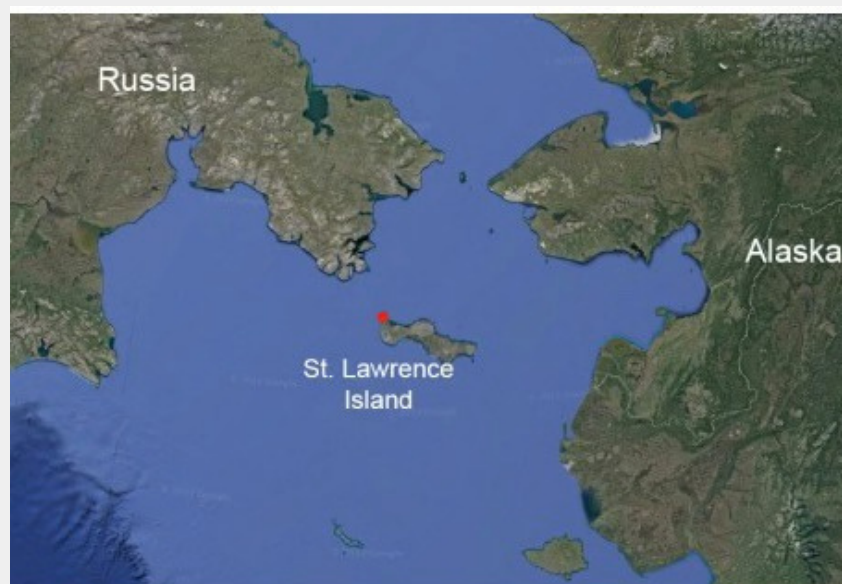
• Pedro Bay



Pedro Bay Team Village - 2024



• Gambell



LightShine Ministries Alaskan Missionaries

Steve & Renee Hoey

Steve and Renée had been residing in Lancaster, PA since 2002 but in September 2020 they relocated to Homer, AK. Serving as missionaries with LightShine Ministries, Steve is now the Director of Alaska Ministries. This involves yearly in-person meeting with all of LightShine's network of ministry partners throughout Alaska as well as new ministry development. He and Renée focus on prison ministry and ministry to hurting/broken people.

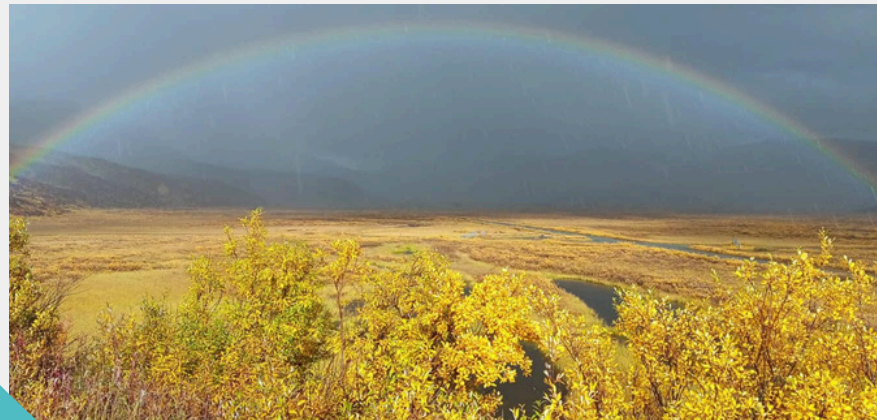
Bob & Angie Neuenschwander

Bob & Angie have been serving in Alaska with LightShine Ministries since 2018. They both always wanted to visit the beautiful state of Alaska, so when they came across the LightShine booth at the Solanco fair in 2017, they both were drawn to the mission. Jump ahead to 2024, they moved to the LightShine Ministry Base in Palmer, Alaska and are now our Ministry Base Directors.



• Visiting our Ministry Network Hosts

After all of our teams arrive back home to Pennsylvania, the ministry work does not stop. Now with Bob & Angie joining Steve & Renee as LightShine missionaries living in Alaska, they were able to travel together for a week to meet our various ministry hosts. This is vital time spent on the road to hear about the different needs our hosts have for the coming year so we can plan our teams accordingly for 2025.



Our Directors



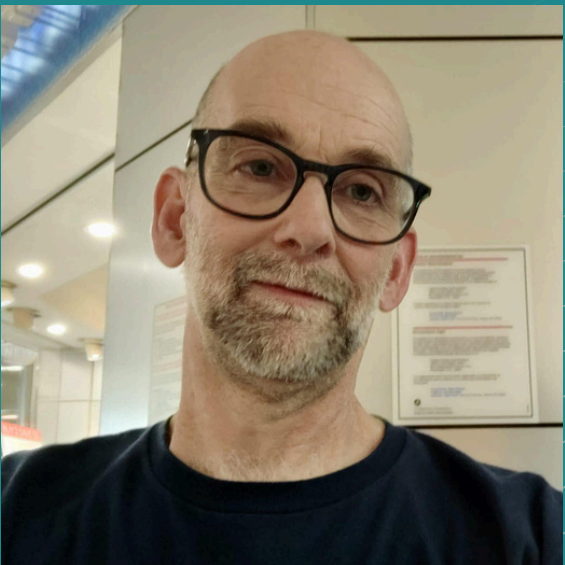
Tom Denlinger
Director of Media & Publicity



Carl Ginder
Director of Finances



Nancy Shaffer
Director of Events & Activities



Randy Sauder
Director of Team Leaders



Tom Law
Director of Food Ministry



Steve Hoey
Director of Alaskan Ministries
Anchor Point, AK



Bob Neuenschwander
LightShine Ministries
Base Director
Palmer, Alaska

• Team Leaders

Tom & Ruth Denlinger



Bob & Angie Neuschwander



Mel & Carol Miller



Carl & Eunice Ginder



Randy & Karen Sauder



Steve & Renee Hoey



Mark & Laura Raifsnider



Jeff & Yolanda Leer



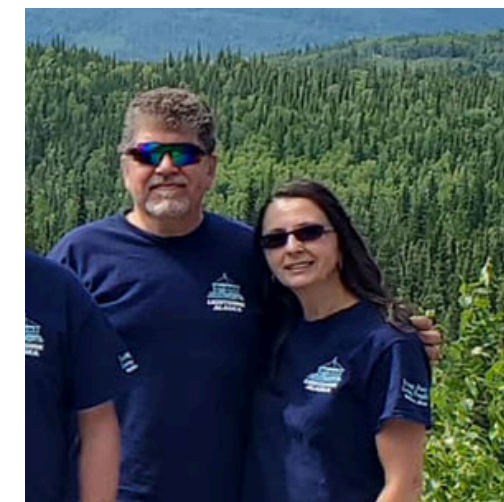
Leon Heisey



Ben Ebersole



Mike & Jacintha Simione



Joe & Nancy Shaffer



• 2024 Income and Expenses

2024 Income:

General Donations: \$50,479

Mission Support: \$365,727

Building Fund: \$78,495

Total Income: \$494,701

2024 Expenses:

Short Term Missions: \$171,690

AK Missionary: \$30,734

Construction Expense: \$76,073

Operational Expense: \$163,653

Total Expenses: \$442,150



LIGHTSHINE ALASKA EMPOWERING *Generation To Generation*

Thank You For Your Support

We look forward to serving our brothers and sisters in Christ in Alaska in 2025 and beyond.



lightshinealaska@comcast.net



LightShine Ministries
P.O. Box 777
Mount Joy, PA 17552

